



AXELVALVES offers a wide range of cast valves to ANSI and DIN standards, designed for the chemical and petrochemical, oil and gas processing, steam generation industries.

APPLICATIONS

POWER

OIL & GAS

PETROCHEMICAL

CHEMICAL

MARINE

PULP & PAPER

CRYOGENICS

MINING

CONSTRUCTION

FEATURES

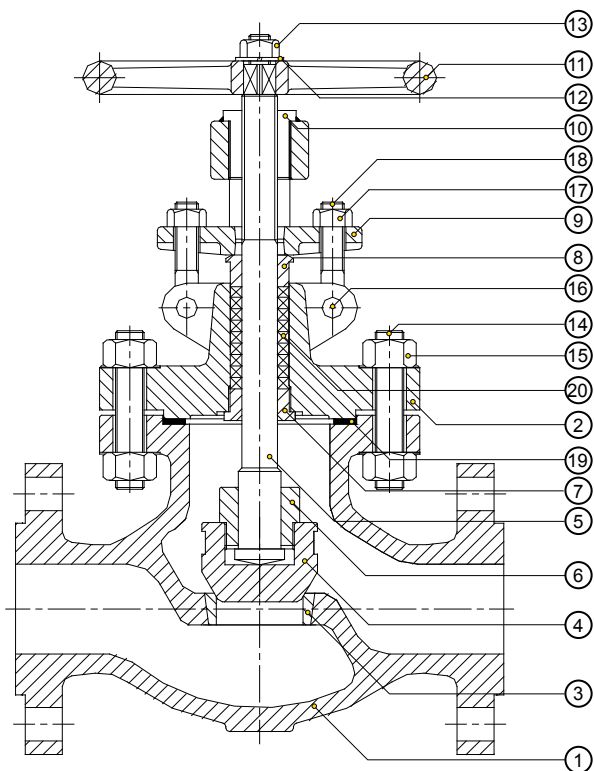
ALV-4 globe valves are manufactured by using high quality cast materials to guarantee superior performance.

- » Valves are fitted with asbestos-free packing.
- » Bolted bonnet valves are fitted with a graphite gasket that is fully contained to protect it from over compression and erosion.
- » Each valve is checked and supplied with certification according to relevant standards and specifications.

MARKING

Valves are identified by a proper name plate as required by MSS-SP25 with all informations of rating, size, valve body and trim material.

CAST STEEL GLOBE VALVES / ALV-4 FLANGED ENDS



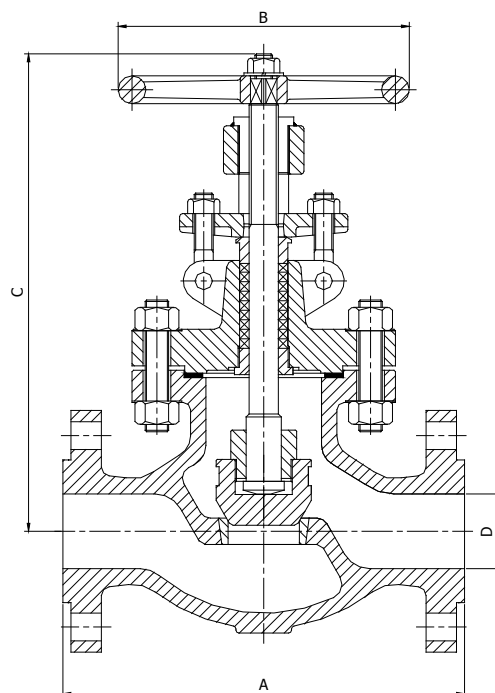
STANDARD MATERIAL SPECIFICATION

| NO | PART | MATERIAL |
|----|--------------|-----------------|
| 1 | Body | ASTM A 216 WCB |
| 2 | Bonnet | ASTM A 216 WCB |
| 3 | Seat Ring | ASTM A 182 F6 |
| 4 | Plug | ASTM A 217 CA15 |
| 5 | Stem | ASTM A 276 410 |
| 6 | Plug Nut | ASTM A 182 F6 |
| 7 | Stem Bushing | ASTM A 276 410 |
| 8 | Gland | ASTM A 276 410 |
| 9 | Gland Flange | ASTM A 105 II |
| 10 | Yoke Sleeve | ASTM B 148 9A |
| 11 | Hand-wheel | Steel |
| 12 | Plate | ASTM A 105 II |
| 13 | Nut | ASTM A 194 2H |
| 14 | Bolts | ASTM A 193 B7 |
| 15 | Nuts | ASTM A 194 2H |
| 16 | Eye Bolts | ASTM A 193 B7 |
| 17 | Nuts | ASTM A 194 2H |
| 18 | Eye Bolt Pin | ASTM A 193 B7 |
| 19 | Gasket | Graphite |
| 20 | Packing | Graphite |

MATERIAL SELECTION TABLE

| EXTERNAL MATERIAL | | | | TRIM MATERIAL | | | | SEALING MATERIAL | |
|-------------------|----------------|------------|------------|---------------|------------|-------------|------------------|------------------|----------|
| ASTM | Body Bonnet | Bolt | Gland Bolt | Gland Nut | Stem | Seat | Plug | Packing | Gasket |
| | | ASTM A 193 | | ASTM A 194 | | AISI | | | |
| A216 | WCB | B7 | B8 | 2H | 410 | CA15 | F6 | Graphite | Graphite |
| A352 | LCB | L7 | B8 | Gr.8 | 304 | CF8 | 304+HF | | |
| A217 | WC6 WC9 | B16 | B8 | 2H | 410 | CA15 | F11+HF F22+HF | Graphite | Graphite |
| A351 | CF8 CF8M | B8 | B8 | Gr.8 | 304 316 | CF8 CF8M | 304 316 | | |

Other materials and material combinations available on request.



Measurements in mm.

CLASS 150

| DIMENSIONS | SIZE | | | | | | | |
|--------------|--------|-----|-----|-----|-----|-----|-----|------|
| | 2 1/2" | 3" | 4" | 5" | 6" | 8" | 10" | 12" |
| A | 216 | 241 | 292 | 356 | 406 | 495 | 622 | 699 |
| B | 200 | 225 | 250 | 300 | 300 | 400 | 500 | 500 |
| C (Open) | 350 | 420 | 480 | 560 | 665 | 785 | 895 | 1025 |
| D | 65 | 80 | 100 | 125 | 150 | 200 | 250 | 300 |
| Weight kg | 27 | 35 | 53 | 75 | 105 | 160 | 241 | 375 |

CLASS 300

| DIMENSIONS | SIZE | | | | | | | |
|--------------|--------|-----|-----|-----|-----|-----|------|------|
| | 2 1/2" | 3" | 4" | 5" | 6" | 8" | 10" | 12" |
| A | 292 | 318 | 356 | 400 | 445 | 559 | 622 | 711 |
| B | 200 | 225 | 250 | 300 | 300 | 425 | 500 | 575 |
| C (Open) | 440 | 450 | 485 | 655 | 775 | 915 | 1005 | 1185 |
| D | 65 | 80 | 100 | 125 | 150 | 200 | 250 | 300 |
| Weight kg | 35 | 48 | 75 | 116 | 150 | 250 | 343 | 580 |

CLASS 600

| DIMENSIONS | SIZE | | | | | | | |
|--------------|--------|-----|-----|-----|-----|------|------|------|
| | 2 1/2" | 3" | 4" | 5" | 6" | 8" | 10" | 12" |
| A | 330 | 356 | 432 | 508 | 559 | 660 | 787 | 838 |
| B | 250 | 350 | 425 | 500 | 575 | 700 | 900 | 1000 |
| C (Open) | 590 | 645 | 715 | 825 | 950 | 1060 | 1500 | 1645 |
| D | 65 | 80 | 100 | 125 | 150 | 200 | 250 | 300 |
| Weight kg | 44,7 | 65 | 110 | 178 | 260 | 460 | 713 | 1140 |

TEST PRESSURES

| CLASS LBS | SHELL/BACKSEAT HYDROSTATIC BAR | SEAT HYDROSTATIC BAR | SEAT PNEUMATIC BAR |
|--------------|-----------------------------------|-------------------------|-----------------------|
| 150 | 31 | 24 | 6 |
| 300 | 81 | 60 | 6 |
| 600 | 162 | 119 | 6 |

VALVES ARE MANUFACTURED IN ACCORDANCE WITH THE FOLLOWING STANDARDS

| | |
|---------------|--|
| API 600 | Cast steel valves |
| API 598 | Valve inspection and test |
| ANSI B 16.34 | Steel valve, flanged and butt weld ends |
| ANSI B 16.5 | Steel pipe flanges and flanged fittings |
| ANSI B16.10 | Face to face dimensions of ferrous valves |
| MSS-SP-25 | Standard marking system for valves |
| MSS-SP-6 | Standard finishes for contact faces of pipe, flanges and connecting end flanges of valves and fittings |
| NACE Mr 01.75 | Material requirements: Sulfide stress cracking resistant |
| BS 5352 | Cast and forged steel wedge gate, globe and check valves, screwed and socket weld ends |

AVAILABLE ON REQUEST

- » DIN and GOST Flanges
- » With Regulating Plug
- » With Double Stage Plug
- » With Stop Check Plug
- » Heating Jacket
- » By Pass
- » Other Valve Materials Available
(Hastelloy C, Titanium, Monel etc.)

DESIGN AND DIMENSIONS

- » According to Standards:
ANSI, API, BS, DIN, GOST

Please note, this is a condensed catalogue.

For further information, contact AXELVALVES.

Subject to change without prior notice.