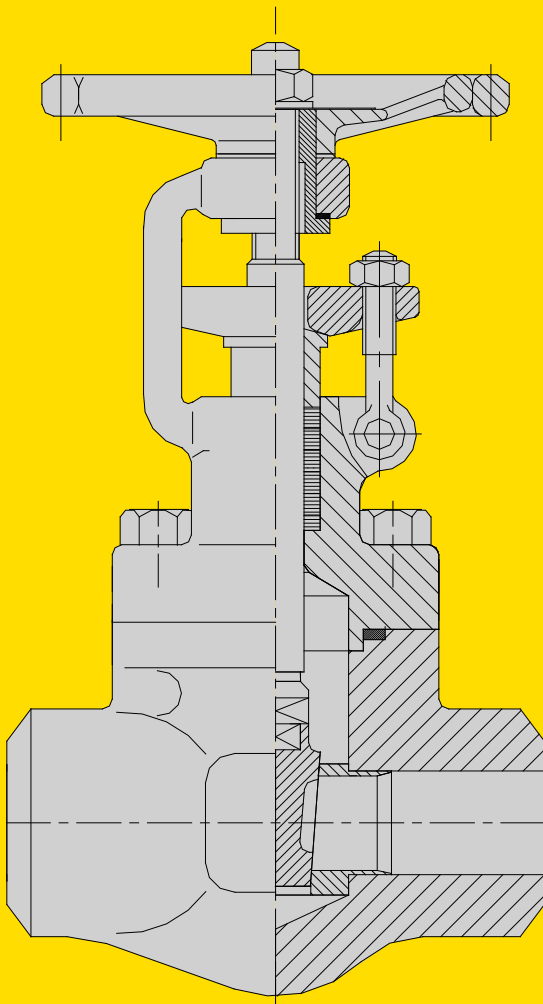


FORGED STEEL GATE VALVES ALV-1



NOMINAL PRESSURE

ANSI Class 150-1500

PN 16-250

NOMINAL SIZE

1/4"-2"

DN 8-50

MATERIALS

Carbon Steel

Low Alloy Steel

Stainless Steel

CONNECTIONS

Socket Weld

Butt Weld

Threaded

Flanged



AXELVALVES offers a wide range of forged valves to ANSI and DIN standards, designed for the chemical and petrochemical, oil and gas processing, steam generation industries.

APPLICATIONS

POWER

OIL & GAS

PETROCHEMICAL

CHEMICAL

MARINE

PULP & PAPER

CRYOGENICS

MINING

CONSTRUCTION

FEATURES

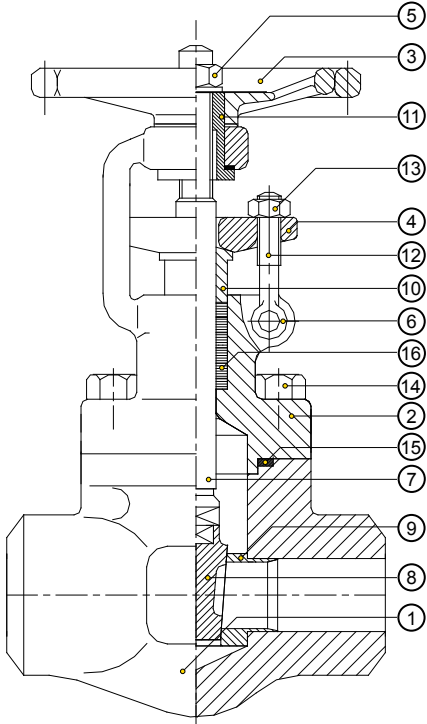
ALV-1 gate valves are manufactured by using high quality forged materials to guarantee superior performance.

- » Valves are fitted with asbestos-free packing.
- » Bolted bonnet valves are fitted with a stainless steel 316 spiral wound graphite gasket that is fully contained to protect it from over compression and erosion.
- » Each valve is checked and supplied with certification according to relevant standards and specifications.

MARKING

Valves are identified by a proper name plate as required by MSS-SP25 with all informations of rating, size, valve body and trim material.

FORGED STEEL GATE VALVES / ALV-1 BOLTED/WELDED BONNET



STANDARD MATERIAL SPECIFICATION

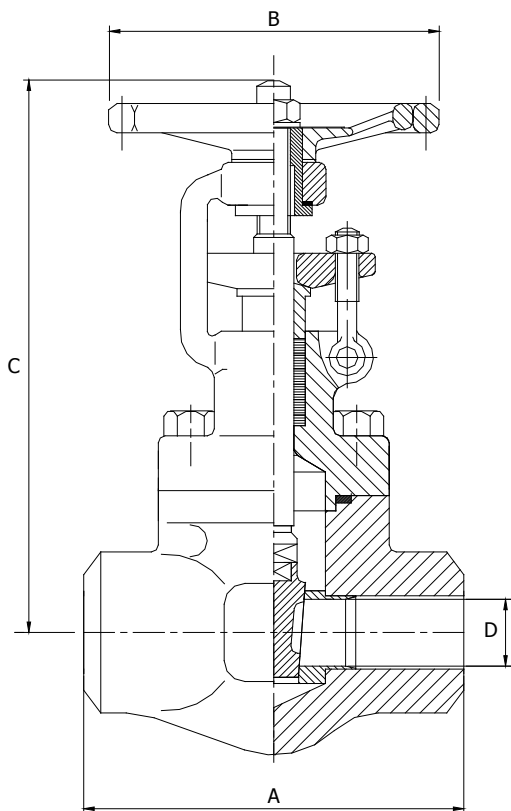
NO	PART	MATERIAL
1	Body	ASTM A 105
2	Bonnet	ASTM A 105
3	Hand-wheel	Carbon Steel
4	Gland Flange	ASTM A 105
5	Hand-wheel Nut	Carbon Steel
6	Eyebolt Screw	Carbon Steel Zinc
7	Stem	ASTM A 276 type 410
8	Wedge	ASTM A 182 - F6
9	Seats	ASTM A 276 type 410
10	Packing Gland	ASTM A 276 type 410
11	Yoke Nut	ASTM A 582 type 416
12	Gland Eyebolt	ASTM A 193 - B8
13	Gland Nut	ASTM A 194 - 2H
14	Cap Screw	ASTM A 193 - B7
15	Gasket	Spiral Wound AISI 316 + Graphite
16	Packing	Graphite

MATERIAL SELECTION TABLE

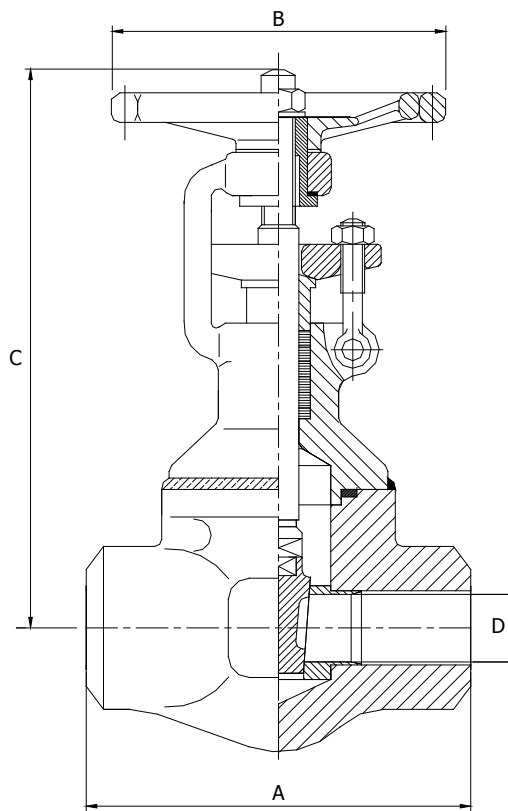
EXTERNAL MATERIAL		TRIM MATERIAL			SEALING MATERIAL				
ASTM	Body Bonnet	Bolt	Gland Bolt	Gland Nut	Stem	Seats	Wedge	Packing	Gasket
		ASTM A 193		ASTM A 194	AISI			Graphite Rings	Spiral Wound AISI 316 + Graphite
A105	A105	B7	B8	2H	410 316 410 Monel	410 316 416HF Monel	F6 F316 F6 Monel		
A350	LF2	L7	B8	Gr. 8	410 316	410 316	F6 F316		
A182	F5 F11 F22	B16	B8	2H	410	410	F6		
	F304 F316	B8	B8	Gr. 8	304 316	304 316	F304 F316		

THREADED, BUTT WELD AND SOCKET WELD ENDS

Bolted Bonnet



Welded Bonnet



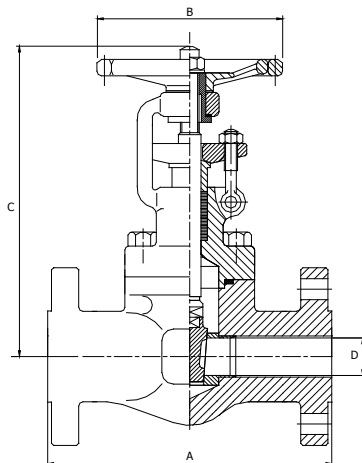
Measurements in mm.

CLASS 800 – BOLTED BONNET / WELDED BONNET

DIMENSIONS		SIZE							
Standard Bore		3/8"	1/2"	3/4"	1"	1.1/4"	1.1/2"	2"	-
Full Bore		1/4"	3/8"	1/2"	3/4"	1"	1.1/4"	1.1/2"	2"
A		81	81	88	110	128	128	128	210
B		92	92	92	102	130	150	175	175
C (Closed)		133	142	147	170	197	215	238	279
D		7	9,5	12,7	18	23,8	30,5	36,5	45,7
Weight kg	Welded	1,8	1,9	2,3	3,6	4,8	7,5	10,7	16
	Bolted	1,7	1,8	2,2	3	4,2	6,5	9,2	13,8

CLASS 1500 – BOLTED BONNET / WELDED BONNET

DIMENSIONS		SIZE							
Standard Bore		3/8"	1/2"	3/4"	1"	1.1/4"	1.1/2"	2"	-
Full Bore		1/4"	3/8"	1/2"	3/4"	1"	1.1/4"	1.1/2"	2"
A		-	88	110	128	128	128	210	210
B		-	92	102	130	150	150	175	175
C (Closed)		-	147	170	197	215	238	279	279
D		-	9,5	12,7	18	23,8	30,5	36,5	45,7
Weight kg	Bolted	-	2,3	3,6	4,8	7,5	10,7	16	16,5
	Welded	-	2,2	3	4,2	6,5	9,2	13,8	13,8



Measurements in mm.

CLASS 150 / 300 / 600 – BOLTED BONNET – STANDARD BORE

DIMENSIONS	RATING	SIZE					
		1/2"	3/4"	1"	1 1/4"	1 1/2"	2"
A	150 RF	108	117	127	-	165	178
	300 RF	140	152	165	-	190	216
	600 RF	165	190	216	-	241	292
B	-	92	92	102	-	150	175
C (Closed)	-	164	177	184	-	221	237
D	-	9,5	12,7	18	-	30,5	36,5
Weight kg	150 RF	3	4,8	6	-	10	16
	300 RF	4	6	8	-	17	22
	600 RF	4,6	6,3	8,4	-	17,4	23

CLASS 300 / 600 – BOLTED BONNET – FULL BORE

DIMENSIONS	RATING	SIZE					
		1/2"	3/4"	1"	1 1/4"	1 1/2"	2"
A	300 RF	140	152	165	-	190	216
	300 RTJ	151	165	178	-	203	232
	600 RF	165	190	216	-	241	292
	600 RTJ	164	190	216	-	241	295
B	-	92	102	130	-	175	175
C (Closed)	-	143	163	193	-	236	279
D	-	12,7	18	23,8	-	36,5	45,7
Weight kg	300 RF/RTJ	4,5	6,2	8,2	-	18	20,5
	600 RF/RTJ	5	7	9,2	-	19	26

CLASS 1500 – ROUND BOLTED BONNET – FULL BORE

DIMENSIONS	RATING	SIZE					
		1/2"	3/4"	1"	1 1/4"	1 1/2"	2"
A	1500 RF	216	229	254	279	305	368
	1500 RTJ	216	229	254	279	305	371
B	-	130	150	150	175	175	175
C (Closed)	-	270	300	312	303	337	347
D	-	12,7	18	23,8	30,5	36,5	45,7
Weight kg	1500RF/RTJ	10	16	20	31	38	54

TEST PRESSURES

CLASS LBS	SHELL/BACKSEAT HYDROSTATIC BAR	SEAT HYDROSTATIC BAR	SEAT PNEUMATIC BAR
150	31	24	6
300	81	60	6
600	162	119	6
800	216	159	6
1500	405	298	6

VALVES ARE MANUFACTURED IN ACCORDANCE WITH THE FOLLOWING STANDARD

API 602	Forged steel valves
API 598	Valve inspection and test
ANSI B16.34	Steel valve flanged and butt weld ends
ANSI B16.5	Steel pipe flanges and flanged fittings
ANSI B 16.10	Face to face and dimensions of ferrous valves
ANSI B16.11	Forged steel fittings, Socket welding and threaded
MSS-SP-25	Standard marking system for valves
MSS-SP-6	Standard finishes for contact faces of pipe, flanges and connecting end flanges of valves and fittings
NACE Mr 01.75	Material requirements: Sulfide stress cracking resistant
BS 5352	Cast and forged steel wedge gate, globe and check valves, screwed and socket weld ends

AVAILABLE ON REQUEST:

- » DIN and GOST Flanges
- » Flexible Wedge
- » Gear Operated
- » Electric Actuated
- » Cryogenic Extended Bonnet and Packing
- » Other Valve Materials Available
- » (Hastelloy C, Titanium, Monel etc.)

DESIGN AND DIMENSIONS:

- » According to Standards:
- » ANSI, API, BS, DIN, GOST

Please note, this is a condensed catalogue.
For further information, contact AXELVALVES.

Subject to change without prior notice.